

Surface Mount Frequency Mixer

SKY-60H+

Level 17 (LO Power +17 dBm) 2500 to 6000 MHz



CASE STYLE: BJ398

Maximum Ratings

Operating Temperature	-40°C to 85°C
Storage Temperature	-55°C to 100°C
RF Power	200mW
IF Current	40mA
Permanent damage may occur if any of these limits are exceeded.	

Pin Connections

LO	1
RF	5
IF	7
GROUND	2,3,4,6,8

Features

- low conversion loss, 6.2 dB typ.
- good L-R isolation, 28 dB typ.
- J-leads for strain relief

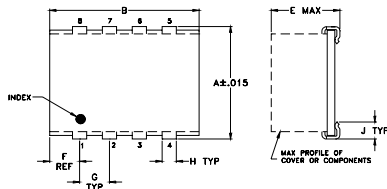
Applications

- line of sight links
- fixed satellite

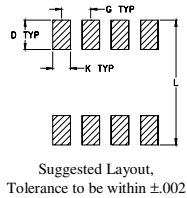
+RoHS Compliant

The +Suffix identifies RoHS Compliance. See our web site for RoHS Compliance methodologies and qualifications

Outline Drawing



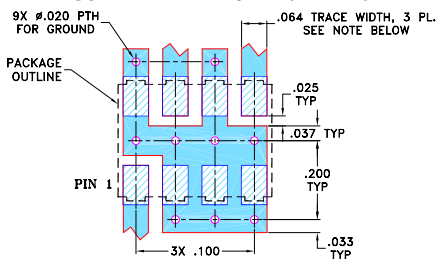
PCB Land Pattern



Outline Dimensions (inch/mm)

A	B	C	D	E	F	G
.305	.390	--	.100	.105	.045	.100
7.75	9.91	--	2.54	2.67	1.14	2.54
H	J	K	L	wt		
.047	.065	.065	.325	grams		
1.19	1.65	1.65	8.26	0.20		

Demo Board MCL P/N: TB-11 Suggested PCB Layout (PL-056)



NOTES:

1. TRACE WIDTH IS SHOWN FOR ROGERS RO4350B WITH DIELECTRIC THICKNESS .030" ± .002". COPPER: 1/2 OZ. EACH SIDE. FOR OTHER MATERIALS TRACE WIDTH MAY NEED TO BE MODIFIED.
2. BOTTOM SIDE OF THE PCB IS CONTINUOUS GROUND PLANE.
 - DENOTES PCB COPPER LAYOUT WITH SMOBC (SOLDER MASK OVER BARE COPPER)
 - DENOTES COPPER LAND PATTERN FREE OF SOLDER MASK

Electrical Specifications

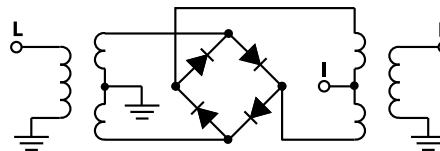
FREQUENCY (MHz)		CONVERSION LOSS (dB)		LO-RF ISOLATION (dB)		LO-IF ISOLATION (dB)		IP3 at center band (dBm)	
LO/RF	IF	Mid-Band	Total Range	Typ.	Min.	Typ.	Min.	Typ.	
$f_L - f_U$		\bar{X}	σ	Max.					
2500-6000	DC-1500	6.20	.20	9.7	28	17	14	8	23

1 dB COMP.: +9 dBm typ.

Typical Performance Data

Frequency (MHz)		Conversion Loss (dB)	Isolation L-R (dB)	Isolation L-I (dB)	VSWR RF Port (:1)	VSWR LO Port (:1)
RF	LO	LO +17dBm	LO +17dBm	LO +17dBm	LO +17dBm	LO +17dBm
2500.00	2530.00	6.88	32.29	13.59	3.93	6.58
2698.11	2728.11	6.44	29.33	13.15	3.72	4.96
2896.23	2926.23	6.21	24.54	11.85	3.49	3.45
3000.00	3030.00	6.21	23.79	11.50	3.26	3.17
3292.45	3322.45	6.19	23.83	11.18	2.33	2.57
3490.57	3520.57	6.35	24.27	11.04	1.89	2.50
3688.68	3718.68	6.80	24.82	11.25	1.60	2.49
3886.79	3916.79	6.23	29.18	11.92	1.49	2.32
3952.83	3982.83	6.22	27.07	13.08	1.52	2.29
4000.00	4030.00	6.21	26.84	13.50	1.55	2.50
4283.02	4253.02	6.47	41.78	15.81	1.95	2.66
4547.17	4517.17	6.54	30.70	17.48	2.33	2.46
4811.32	4781.32	6.73	29.83	19.11	2.72	2.39
4943.40	4913.40	6.75	30.97	20.26	2.69	2.25
5000.00	4970.00	6.75	31.42	20.35	2.73	2.14
5273.58	5243.58	7.08	28.94	22.12	2.54	2.83
5537.74	5507.74	7.79	26.69	23.62	2.26	2.94
5801.89	5771.89	8.51	25.77	24.37	2.35	3.31
5867.92	5837.92	8.43	25.88	24.64	2.58	3.36
6000.00	5970.00	8.38	27.21	24.76	3.17	3.70

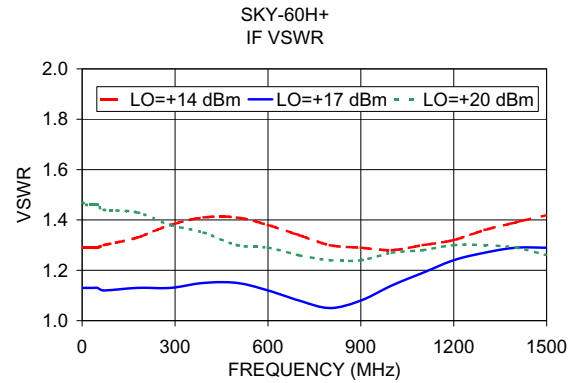
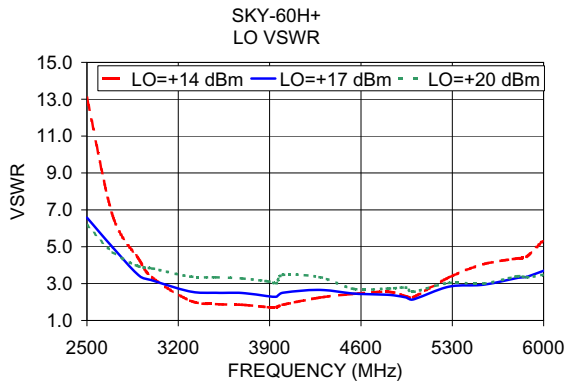
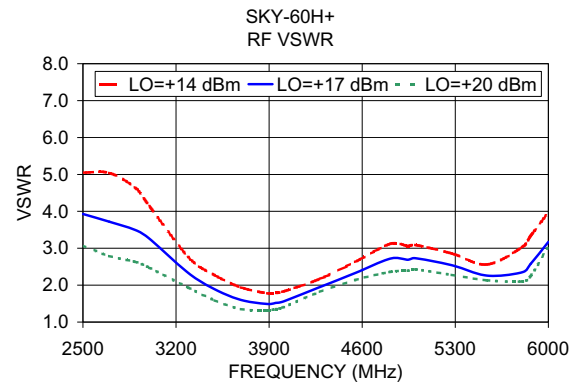
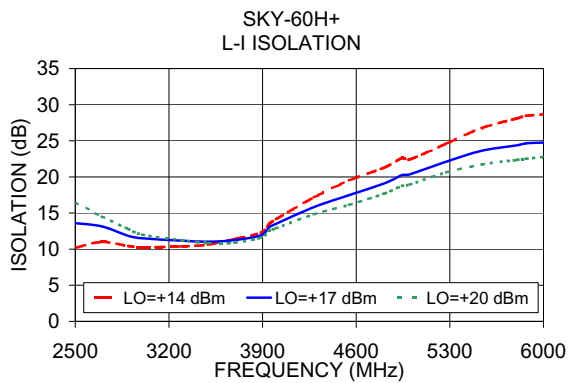
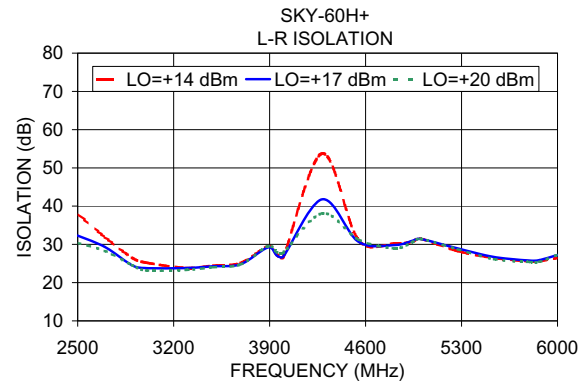
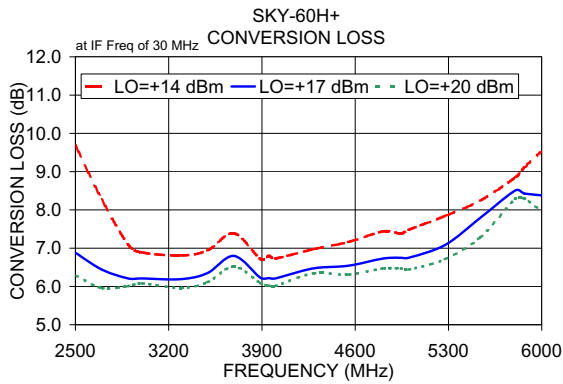
Electrical Schematic



Notes

- Performance and quality attributes and conditions not expressly stated in this specification document are intended to be excluded and do not form a part of this specification document.
- Electrical specifications and performance data contained in this specification document are based on Mini-Circuit's applicable established test performance criteria and measurement instructions.
- The parts covered by this specification document are subject to Mini-Circuits standard limited warranty and terms and conditions (collectively, "Standard Terms"); Purchasers of this part are entitled to the rights and benefits contained therein. For a full statement of the Standard Terms and the exclusive rights and remedies thereunder, please visit Mini-Circuits' website at www.minicircuits.com/MCLStore/terms.jsp





Notes

- A. Performance and quality attributes and conditions not expressly stated in this specification document are intended to be excluded and do not form a part of this specification document.
- B. Electrical specifications and performance data contained in this specification document are based on Mini-Circuit's applicable established test performance criteria and measurement instructions.
- C. The parts covered by this specification document are subject to Mini-Circuits standard limited warranty and terms and conditions (collectively, "Standard Terms"); Purchasers of this part are entitled to the rights and benefits contained therein. For a full statement of the Standard Terms and the exclusive rights and remedies thereunder, please visit Mini-Circuits' website at www.minicircuits.com/MCLStore/terms.jsp

